

EAVE DRIP



VIKING METAL PRODUCTS

1014 SAMPLER WAY, SUITE D, EAST POINT, GA 30344
 OFFICE: 404-669-9100 / FAX: 404-663-0744

MATERIAL:

_____ 24 GAUGE (0.024) GALVANIZED STEEL
 _____ 0.040 ALUMINUM
 _____ OTHER _____
 _____ OTHER _____

COLOR: _____
 FINISH: _____

QUANTITIES:

_____ LINEAL FEET (0'-10' LENGTH)
 _____ OUTSIDE CORNERS 90°
 _____ INSIDE CORNERS 90°
 _____ INTERNAL SPLICE PLATES

DRAWING APPROVAL

FABRICATION WILL PROCEED ONLY AFTER RECEIPT OF THIS SIGNED APPROVAL DRAWING. CUSTOMER SHALL BE RESPONSIBLE FOR VERIFYING ALL DIMENSIONS, SIZES, & QUANTITIES ACCORDING TO THE ACTUAL JOB-SITE CONDITIONS.

APPROVED BY: _____

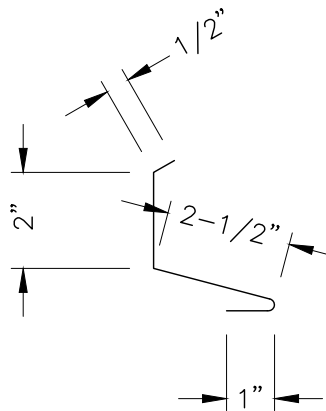
DATE: _____

CUSTOMER NAME:

PROJECT NAME:

SALES REPRESENTATIVE:

NOTES:



END WALL



VIKING METAL PRODUCTS

1014 SAMPLER WAY, SUITE D, EAST POINT, GA 30344
 OFFICE: 404-669-9100 / FAX: 404-663-0744

MATERIAL:

_____ 24 GAUGE (0.024) GALVANIZED STEEL
 _____ 0.040 ALUMINUM
 _____ OTHER _____
 _____ OTHER _____

COLOR: _____
 FINISH: _____

QUANTITIES:

_____ LINEAL FEET (0'-10' LENGTH)
 _____ OUTSIDE CORNERS 90°
 _____ INSIDE CORNERS 90°
 _____ INTERNAL SPLICE PLATES

DRAWING APPROVAL

FABRICATION WILL PROCEED ONLY AFTER RECEIPT OF THIS SIGNED APPROVAL DRAWING. CUSTOMER SHALL BE RESPONSIBLE FOR VERIFYING ALL DIMENSIONS, SIZES, & QUANTITIES ACCORDING TO THE ACTUAL JOB-SITE CONDITIONS.

APPROVED BY: _____

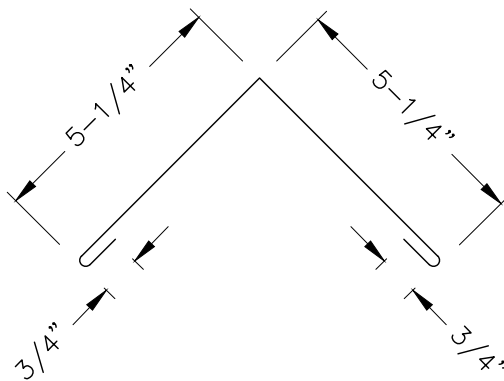
DATE: _____

CUSTOMER NAME:

PROJECT NAME:

SALES REPRESENTATIVE:

NOTES:



RIDGE / HIP



VIKING METAL PRODUCTS

1014 SAMPLER WAY, SUITE D, EAST POINT, GA 30344
 OFFICE: 404-669-9100 / FAX: 404-663-0744

MATERIAL:

_____ 24 GAUGE (0.024) GALVANIZED STEEL
 _____ 0.040 ALUMINUM
 _____ OTHER _____
 _____ OTHER _____

COLOR: _____
 FINISH: _____

QUANTITIES:

_____ LINEAL FEET (0'-10' LENGTH)
 _____ OUTSIDE CORNERS 90°
 _____ INSIDE CORNERS 90°
 _____ INTERNAL SPLICE PLATES

DRAWING APPROVAL

FABRICATION WILL PROCEED ONLY AFTER RECEIPT OF THIS SIGNED APPROVAL DRAWING. CUSTOMER SHALL BE RESPONSIBLE FOR VERIFYING ALL DIMENSIONS, SIZES, & QUANTITIES ACCORDING TO THE ACTUAL JOB-SITE CONDITIONS.

APPROVED BY: _____

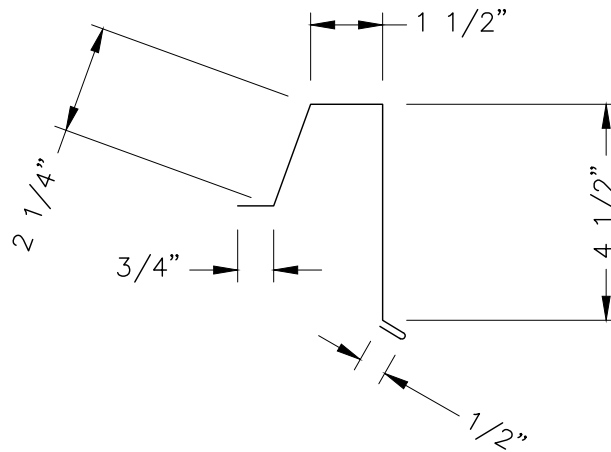
DATE: _____

CUSTOMER NAME:

PROJECT NAME:

SALES REPRESENTATIVE:

NOTES:



RAKE EDGE 1



VIKING METAL PRODUCTS

1014 SAMPLER WAY, SUITE D, EAST POINT, GA 30344
 OFFICE: 404-669-9100 / FAX: 404-663-0744

MATERIAL:

_____ 24 GAUGE (0.024) GALVANIZED STEEL
 _____ 0.040 ALUMINUM
 _____ OTHER _____
 _____ OTHER _____

COLOR: _____
 FINISH: _____

QUANTITIES:

_____ LINEAL FEET (0'-10' LENGTH)
 _____ OUTSIDE CORNERS 90°
 _____ INSIDE CORNERS 90°
 _____ INTERNAL SPLICE PLATES

DRAWING APPROVAL

FABRICATION WILL PROCEED ONLY AFTER RECEIPT OF THIS SIGNED APPROVAL DRAWING. CUSTOMER SHALL BE RESPONSIBLE FOR VERIFYING ALL DIMENSIONS, SIZES, & QUANTITIES ACCORDING TO THE ACTUAL JOB-SITE CONDITIONS.

APPROVED BY: _____

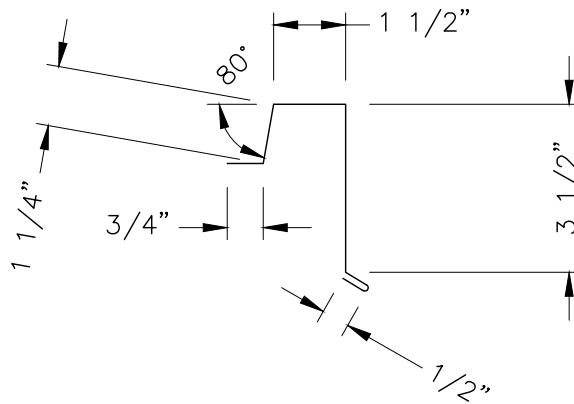
DATE: _____

CUSTOMER NAME:

PROJECT NAME:

SALES REPRESENTATIVE:

NOTES:



RAKE EDGE 2



VIKING METAL PRODUCTS

1014 SAMPLER WAY, SUITE D, EAST POINT, GA 30344
 OFFICE: 404-669-9100 / FAX: 404-663-0744

MATERIAL:

_____ 24 GAUGE (0.024) GALVANIZED STEEL
 _____ 0.040 ALUMINUM
 _____ OTHER _____
 _____ OTHER _____

COLOR: _____
 FINISH: _____

QUANTITIES:

_____ LINEAL FEET (0'-10' LENGTH)
 _____ OUTSIDE CORNERS 90°
 _____ INSIDE CORNERS 90°
 _____ INTERNAL SPLICE PLATES

DRAWING APPROVAL

FABRICATION WILL PROCEED ONLY AFTER RECEIPT OF THIS SIGNED APPROVAL DRAWING. CUSTOMER SHALL BE RESPONSIBLE FOR VERIFYING ALL DIMENSIONS, SIZES, & QUANTITIES ACCORDING TO THE ACTUAL JOB-SITE CONDITIONS.

APPROVED BY: _____

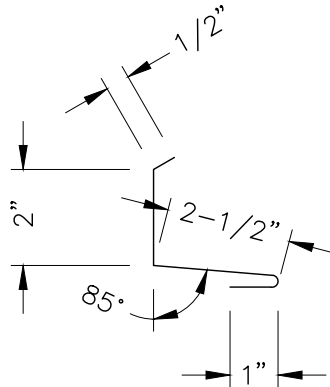
DATE: _____

CUSTOMER NAME:

PROJECT NAME:

SALES REPRESENTATIVE:

NOTES:



SIDE WALL



VIKING METAL PRODUCTS

1014 SAMPLER WAY, SUITE D, EAST POINT, GA 30344
 OFFICE: 404-669-9100 / FAX: 404-663-0744

MATERIAL:

_____ 24 GAUGE (0.024) GALVANIZED STEEL
 _____ 0.040 ALUMINUM
 _____ OTHER _____
 _____ OTHER _____

COLOR: _____
 FINISH: _____

QUANTITIES:

_____ LINEAL FEET (0'-10' LENGTH)
 _____ OUTSIDE CORNERS 90°
 _____ INSIDE CORNERS 90°
 _____ INTERNAL SPLICE PLATES

DRAWING APPROVAL

FABRICATION WILL PROCEED ONLY AFTER RECEIPT OF THIS SIGNED APPROVAL DRAWING. CUSTOMER SHALL BE RESPONSIBLE FOR VERIFYING ALL DIMENSIONS, SIZES, & QUANTITIES ACCORDING TO THE ACTUAL JOB-SITE CONDITIONS.

APPROVED BY: _____

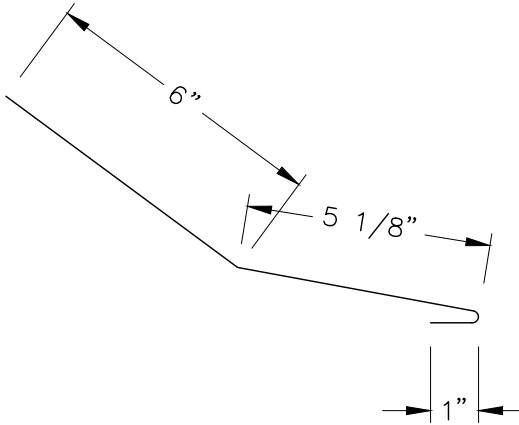
DATE: _____

CUSTOMER NAME:

PROJECT NAME:

SALES REPRESENTATIVE:

NOTES:



TRANSITION



VIKING METAL PRODUCTS

1014 SAMPLER WAY, SUITE D, EAST POINT, GA 30344
 OFFICE: 404-669-9100 / FAX: 404-663-0744

MATERIAL:

_____ 24 GAUGE (0.024) GALVANIZED STEEL
 _____ 0.040 ALUMINUM
 _____ OTHER _____
 _____ OTHER _____

COLOR: _____
 FINISH: _____

QUANTITIES:

_____ LINEAL FEET (0'-10' LENGTH)
 _____ OUTSIDE CORNERS 90°
 _____ INSIDE CORNERS 90°
 _____ INTERNAL SPLICE PLATES

DRAWING APPROVAL

FABRICATION WILL PROCEED ONLY AFTER RECEIPT OF THIS SIGNED APPROVAL DRAWING. CUSTOMER SHALL BE RESPONSIBLE FOR VERIFYING ALL DIMENSIONS, SIZES, & QUANTITIES ACCORDING TO THE ACTUAL JOB-SITE CONDITIONS.

APPROVED BY: _____

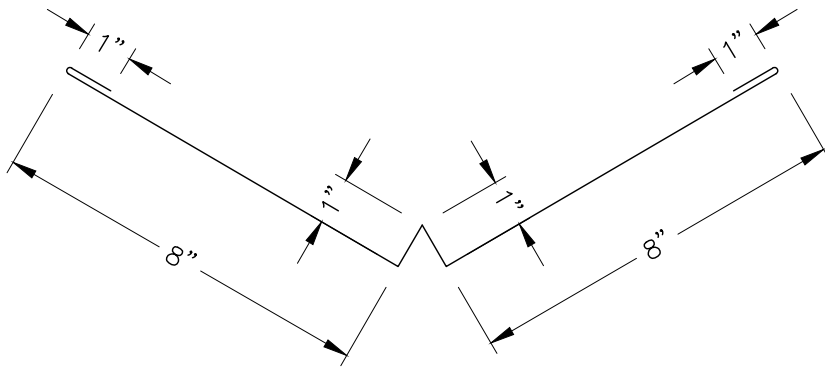
DATE: _____

CUSTOMER NAME:

PROJECT NAME:

SALES REPRESENTATIVE:

NOTES:



W-VALLEY



VIKING METAL PRODUCTS

1014 SAMPLER WAY, SUITE D, EAST POINT, GA 30344
 OFFICE: 404-669-9100 / FAX: 404-663-0744

MATERIAL:

_____ 24 GAUGE (0.024) GALVANIZED STEEL
 _____ 0.040 ALUMINUM
 _____ OTHER _____
 _____ OTHER _____

COLOR: _____
 FINISH: _____

QUANTITIES:

_____ LINEAL FEET (0'-10' LENGTH)
 _____ OUTSIDE CORNERS 90°
 _____ INSIDE CORNERS 90°
 _____ INTERNAL SPLICE PLATES

DRAWING APPROVAL

FABRICATION WILL PROCEED ONLY AFTER RECEIPT OF THIS SIGNED APPROVAL DRAWING. CUSTOMER SHALL BE RESPONSIBLE FOR VERIFYING ALL DIMENSIONS, SIZES, & QUANTITIES ACCORDING TO THE ACTUAL JOB-SITE CONDITIONS.

APPROVED BY: _____

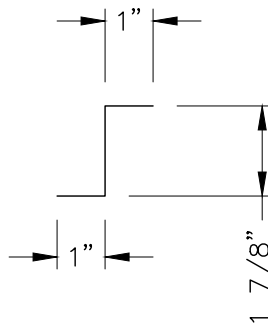
DATE: _____

CUSTOMER NAME:

PROJECT NAME:

SALES REPRESENTATIVE:

NOTES:



Z-CLOSURE 1



VIKING METAL PRODUCTS

1014 SAMPLER WAY, SUITE D, EAST POINT, GA 30344
 OFFICE: 404-669-9100 / FAX: 404-663-0744

MATERIAL:

_____ 24 GAUGE (0.024) GALVANIZED STEEL
 _____ 0.040 ALUMINUM
 _____ OTHER _____
 _____ OTHER _____

COLOR: _____
 FINISH: _____

QUANTITIES:

_____ LINEAL FEET (0'-10' LENGTH)
 _____ OUTSIDE CORNERS 90°
 _____ INSIDE CORNERS 90°
 _____ INTERNAL SPLICE PLATES

DRAWING APPROVAL

FABRICATION WILL PROCEED ONLY AFTER RECEIPT OF THIS SIGNED APPROVAL DRAWING. CUSTOMER SHALL BE RESPONSIBLE FOR VERIFYING ALL DIMENSIONS, SIZES, & QUANTITIES ACCORDING TO THE ACTUAL JOB-SITE CONDITIONS.

APPROVED BY: _____

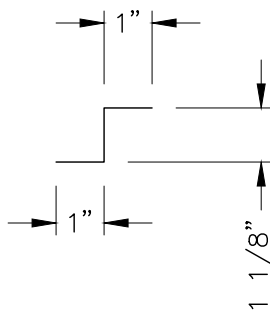
DATE: _____

CUSTOMER NAME:

PROJECT NAME:

SALES REPRESENTATIVE:

NOTES:



Z-CLOSURE 2



VIKING METAL PRODUCTS

1014 SAMPLER WAY, SUITE D, EAST POINT, GA 30344
 OFFICE: 404-669-9100 / FAX: 404-663-0744

MATERIAL:

_____ 24 GAUGE (0.024) GALVANIZED STEEL
 _____ 0.040 ALUMINUM
 _____ OTHER _____
 _____ OTHER _____

COLOR: _____
 FINISH: _____

QUANTITIES:

_____ LINEAL FEET (0'-10' LENGTH)
 _____ OUTSIDE CORNERS 90°
 _____ INSIDE CORNERS 90°
 _____ INTERNAL SPLICE PLATES

DRAWING APPROVAL

FABRICATION WILL PROCEED ONLY AFTER RECEIPT OF THIS SIGNED APPROVAL DRAWING. CUSTOMER SHALL BE RESPONSIBLE FOR VERIFYING ALL DIMENSIONS, SIZES, & QUANTITIES ACCORDING TO THE ACTUAL JOB-SITE CONDITIONS.

APPROVED BY: _____

DATE: _____

CUSTOMER NAME:

PROJECT NAME:

SALES REPRESENTATIVE:

NOTES: